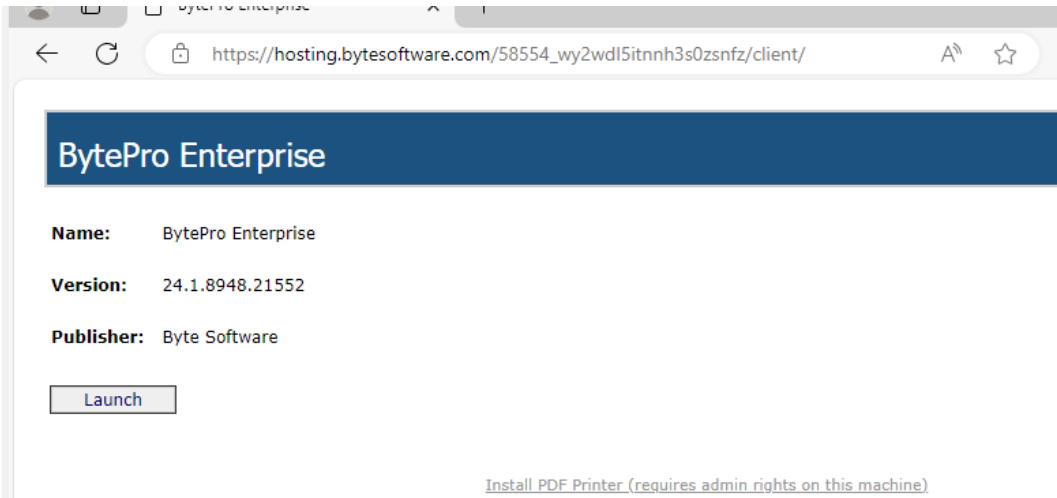
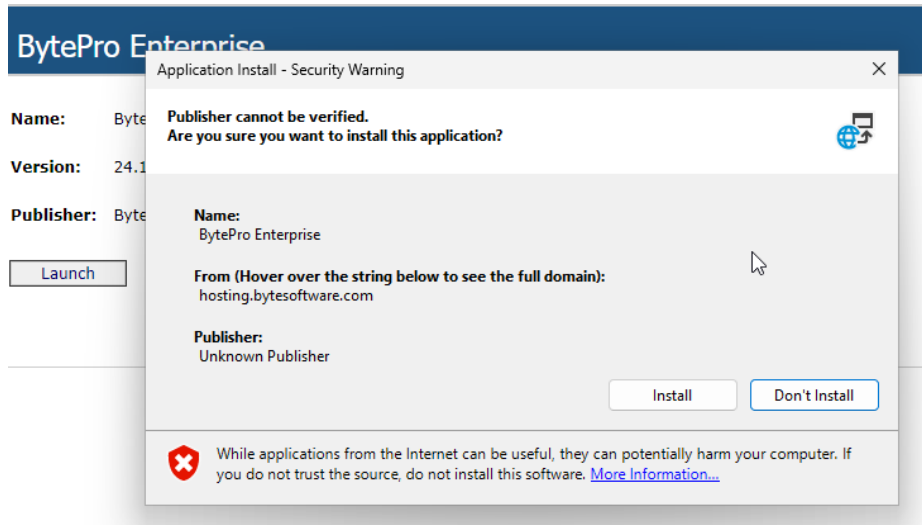


# Byte Installation and Log In

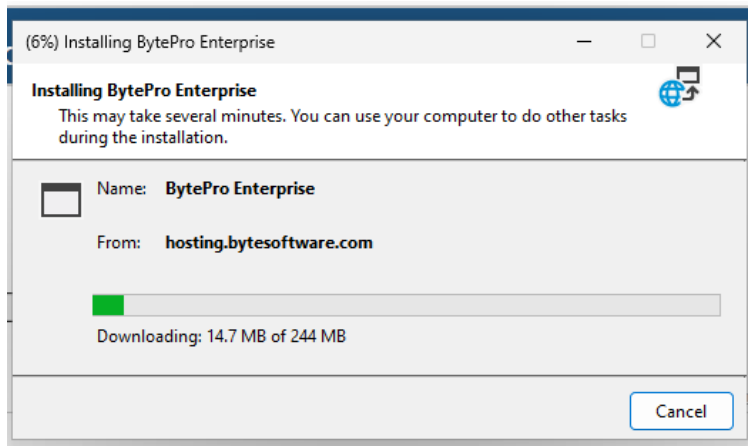
- 1) Go to the Byte Website  
([https://hosting.bytesoftware.com/58554\\_wy2wdl5itnnh3s0zsnfz/client/](https://hosting.bytesoftware.com/58554_wy2wdl5itnnh3s0zsnfz/client/))



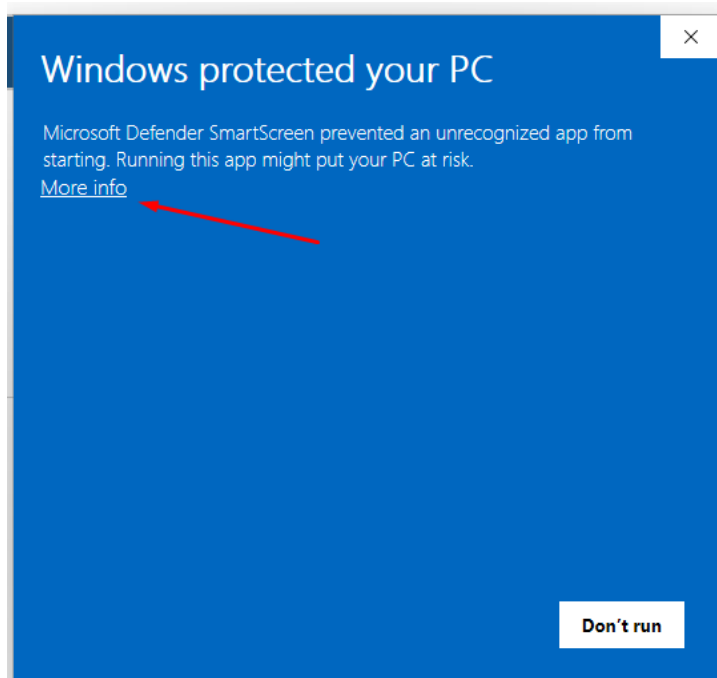
- 2) Click the Launch button and install the installer



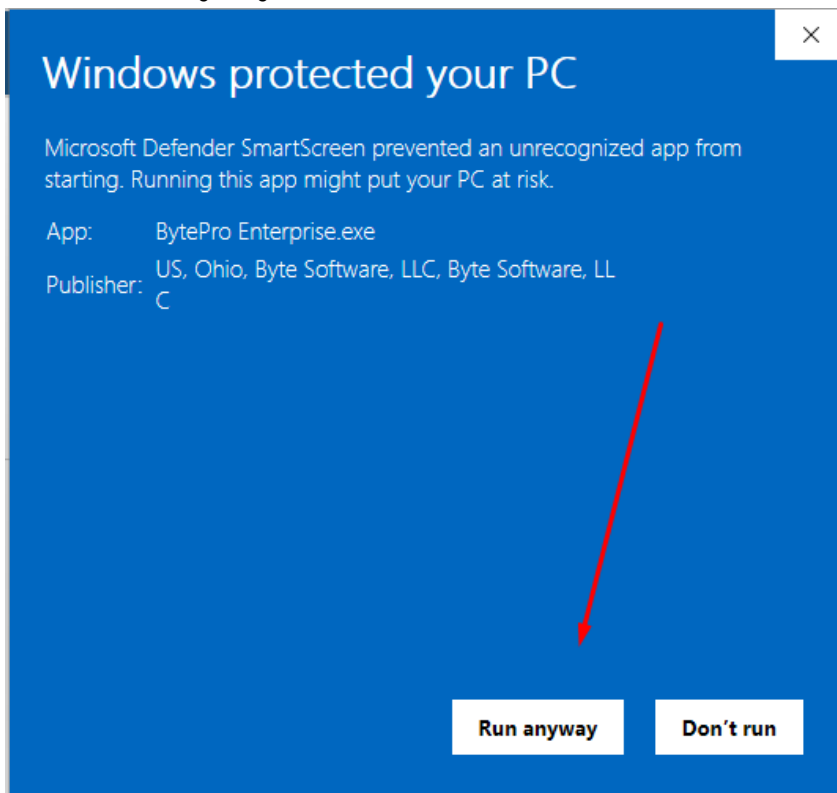
3) Allow the program to download and install



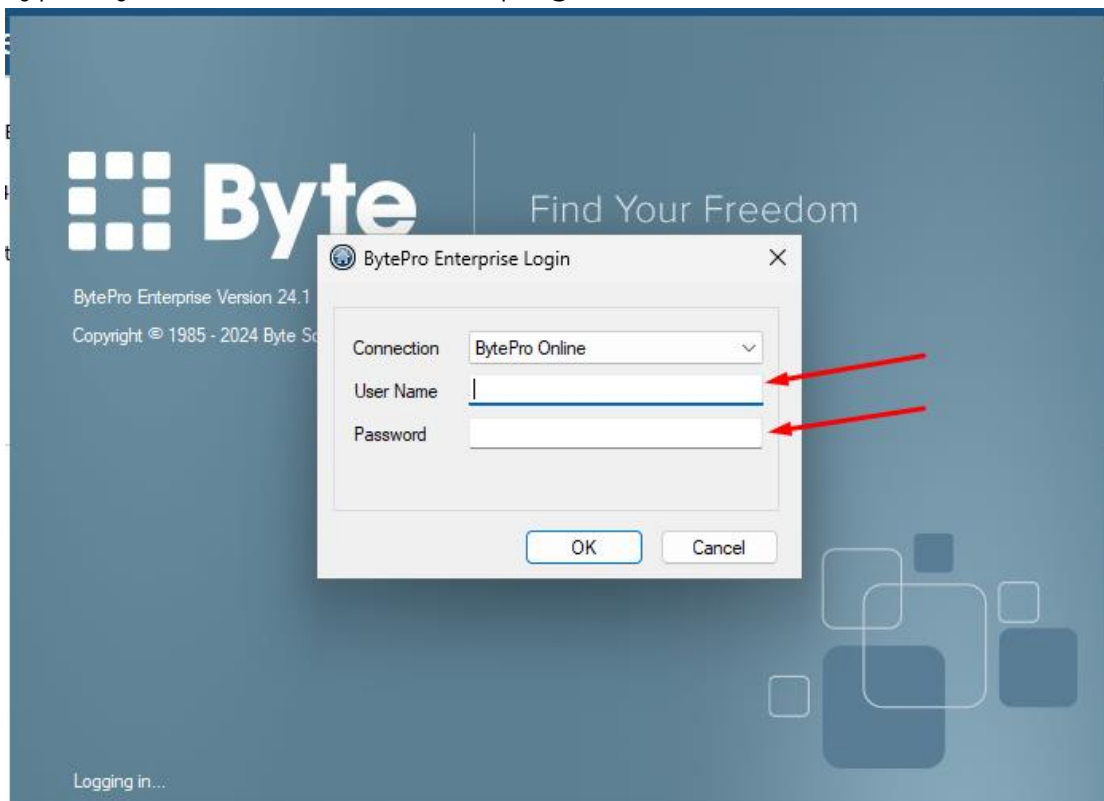
4) Afterwards, click "More Info"



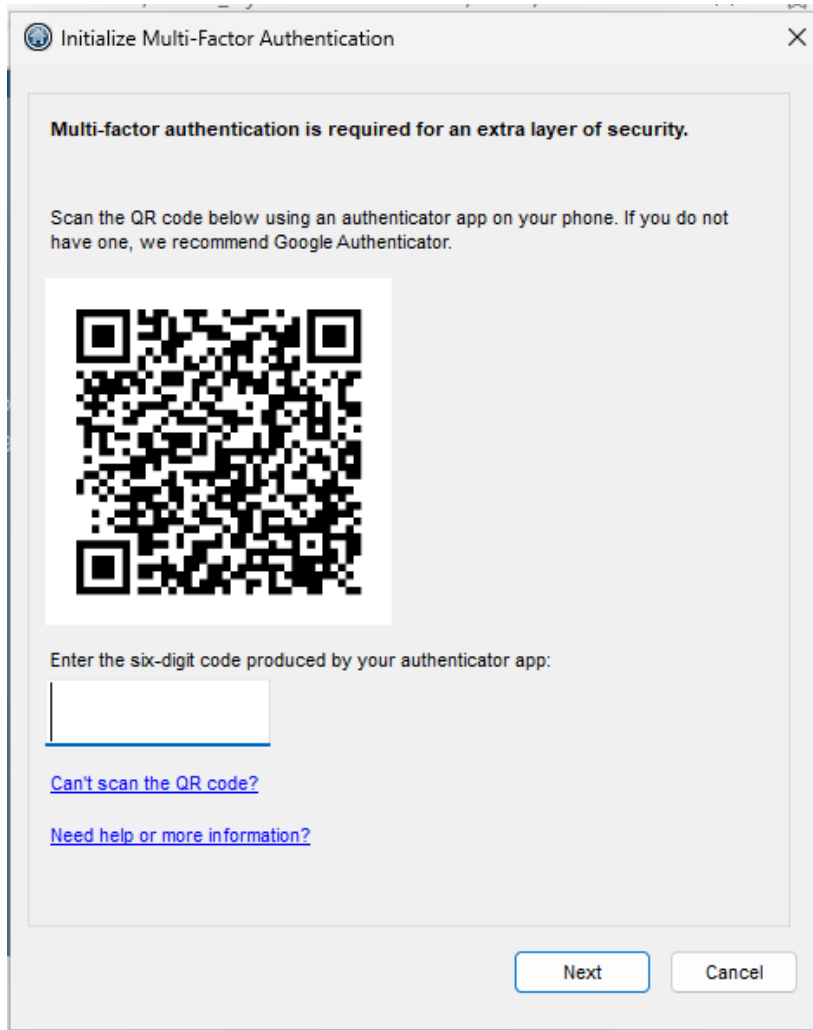
5) Click "Run anyway"



6) Type in your credentials once the program is run



- 7) After typing in your credentials, go to the next step of this document




The image shows a software dialog box titled "Initialize Multi-Factor Authentication". It contains a message stating that multi-factor authentication is required for an extra layer of security. Below this, it instructs the user to scan a QR code using an authenticator app on their phone, recommending Google Authenticator if they don't have one. A QR code is displayed in the center. Below the QR code, there is a text prompt asking the user to enter the six-digit code produced by their authenticator app, followed by a text input field. At the bottom of the dialog, there are two buttons: "Next" and "Cancel". There are also two hyperlinks: "Can't scan the QR code?" and "Need help or more information?".

Initialize Multi-Factor Authentication

Multi-factor authentication is required for an extra layer of security.

Scan the QR code below using an authenticator app on your phone. If you do not have one, we recommend Google Authenticator.



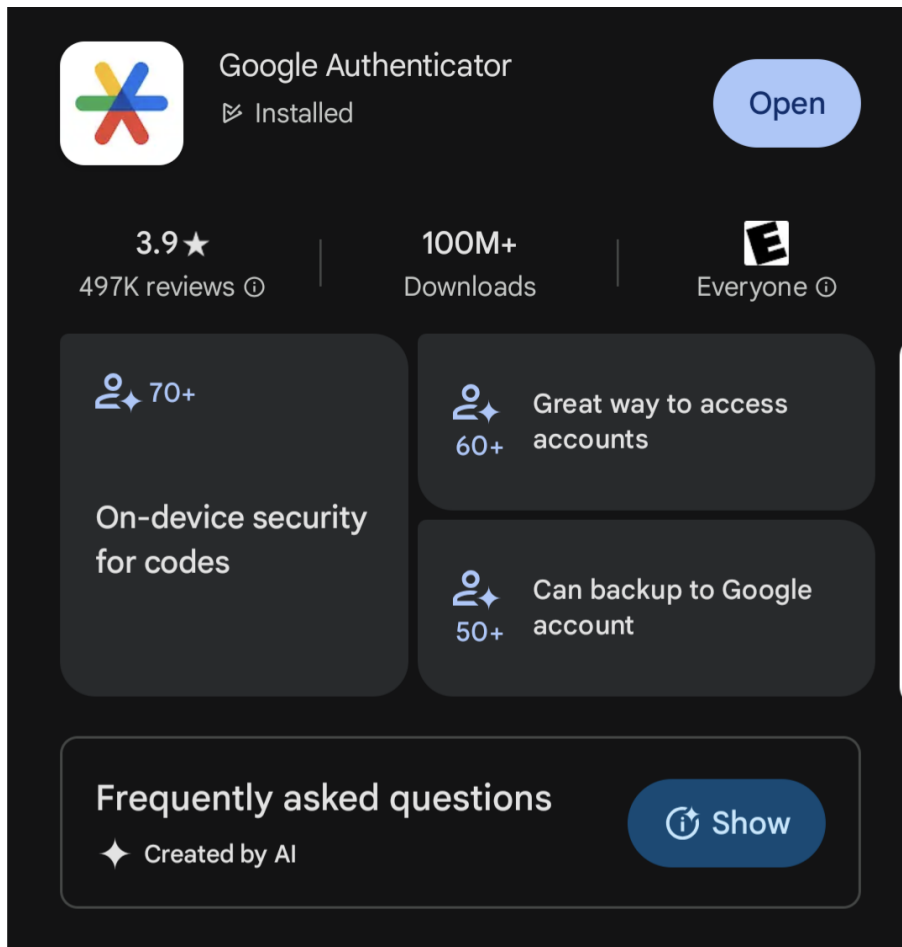
Enter the six-digit code produced by your authenticator app:

[Can't scan the QR code?](#)

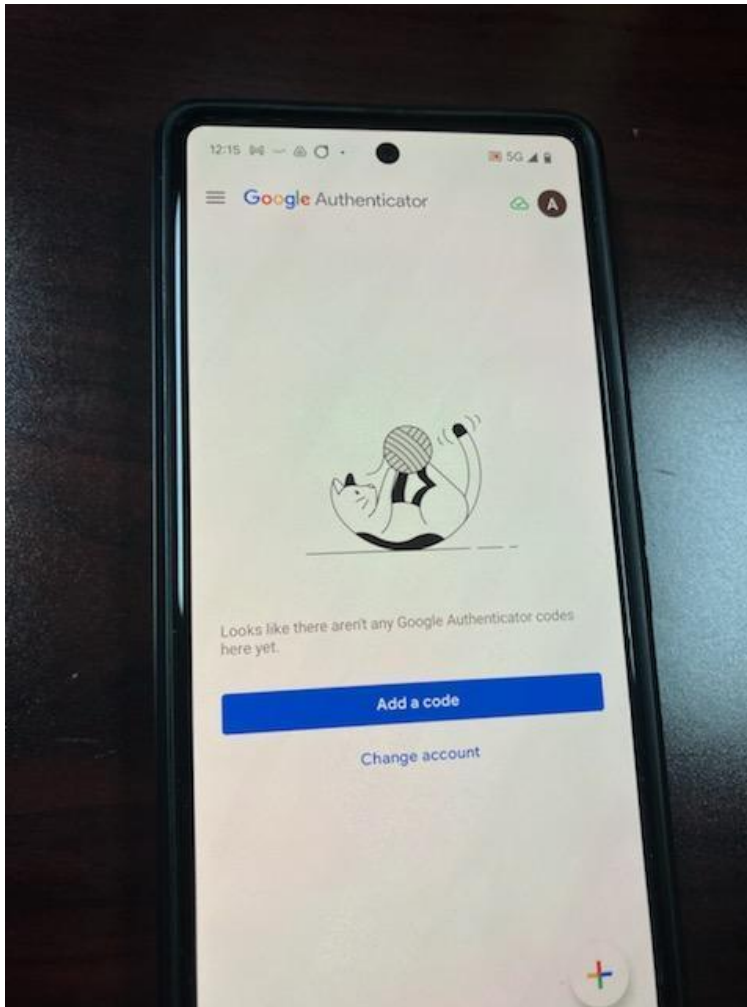
[Need help or more information?](#)

Next Cancel

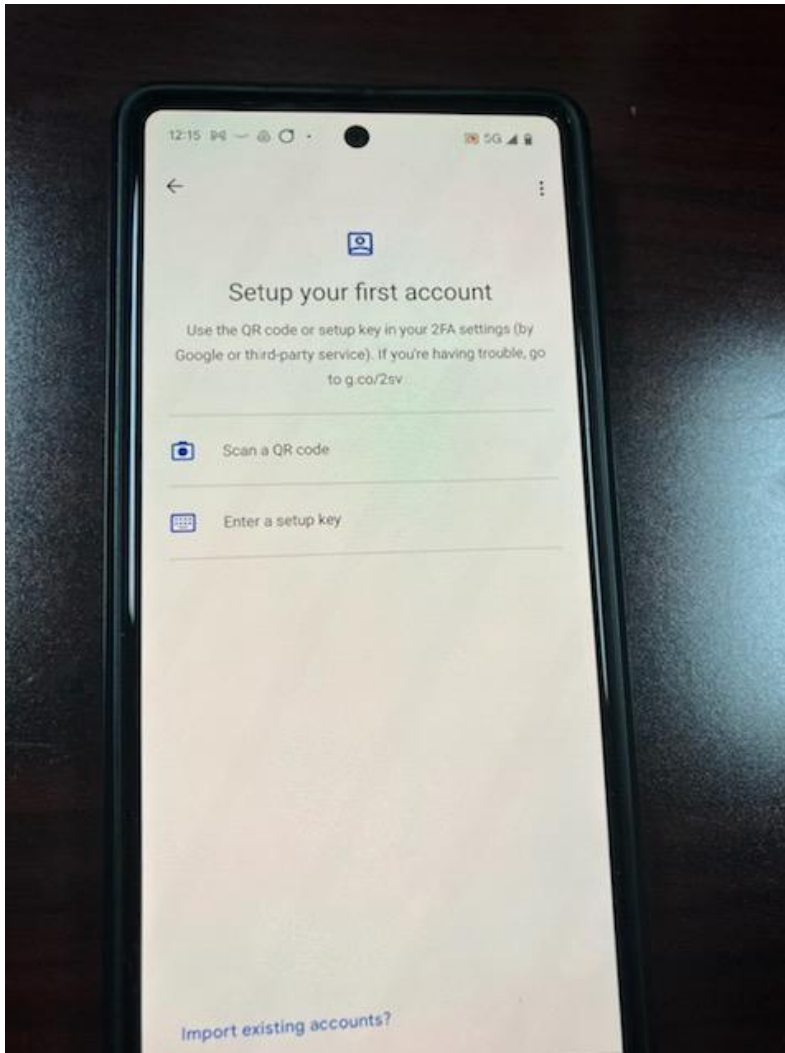
- 8) Obtain your smartphone, and go to install the below application “Google Authenticator”



9) Sign in under any account, and add a code



10) Click "Scan a QR Code"

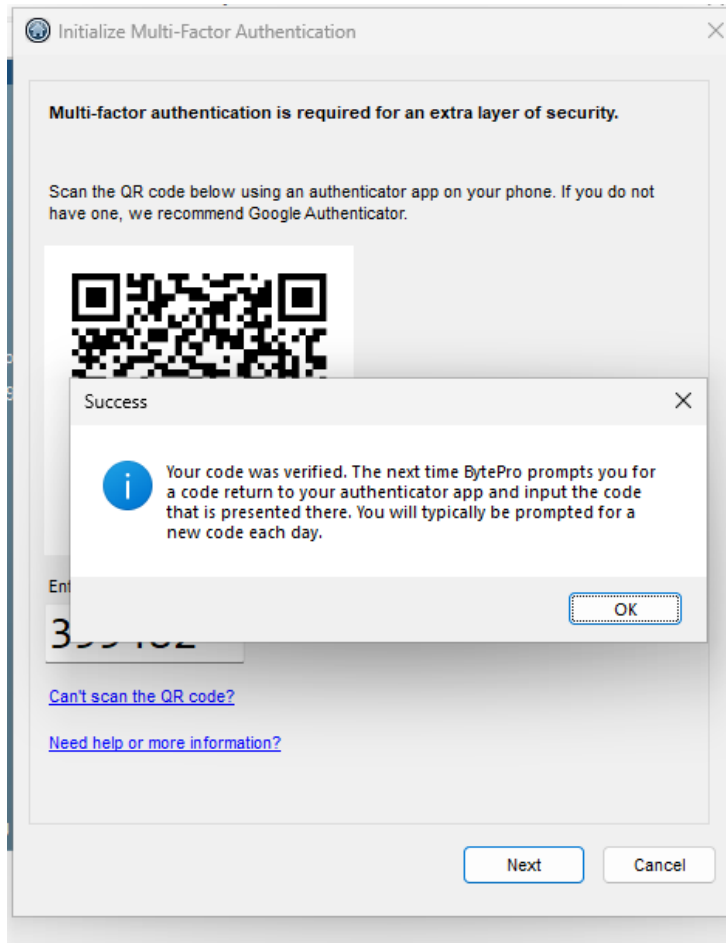


- 11) Scan the code with your phone, clicking "Allow" if your phone prompts you to allow access to the camera for Google Authenticator

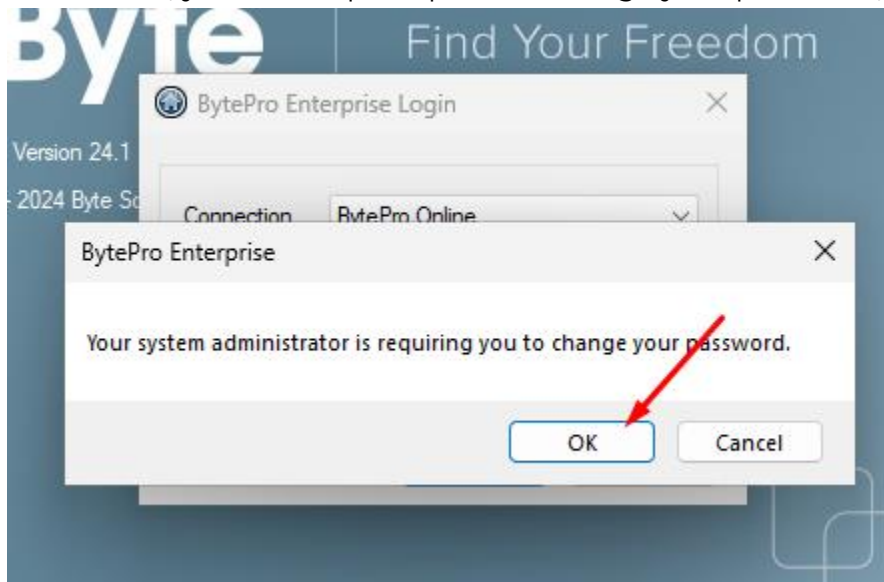




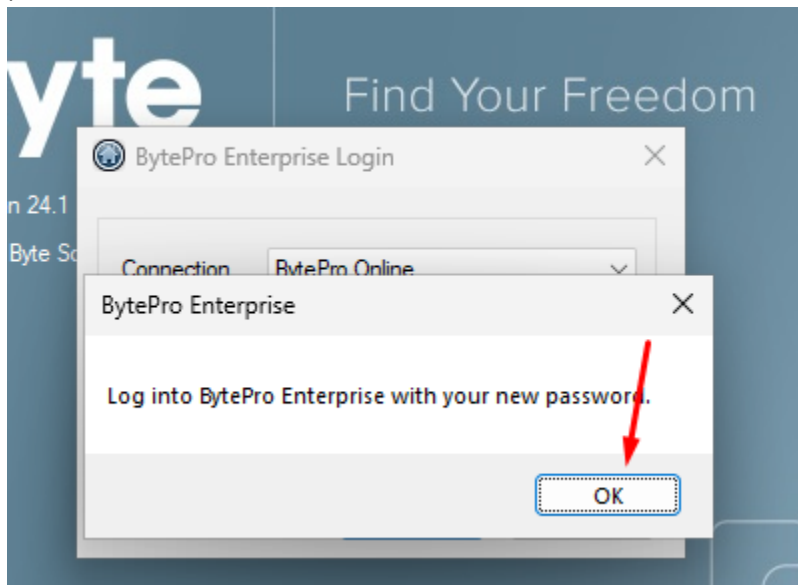
- 12) After scanning the code, it should give you a six digit code that changes every 30 seconds, plug that into the “Enter the six-digit code produced by your authenticator app” . Once a day you will have to input the six digit code, but will not have to re-scan the code.



- 13) Afterwards, you will be prompted to change your password, click OK



- 14) After changing your password to the new password, log in with the new password



15) Once signed in, you will be logged into Byte

